

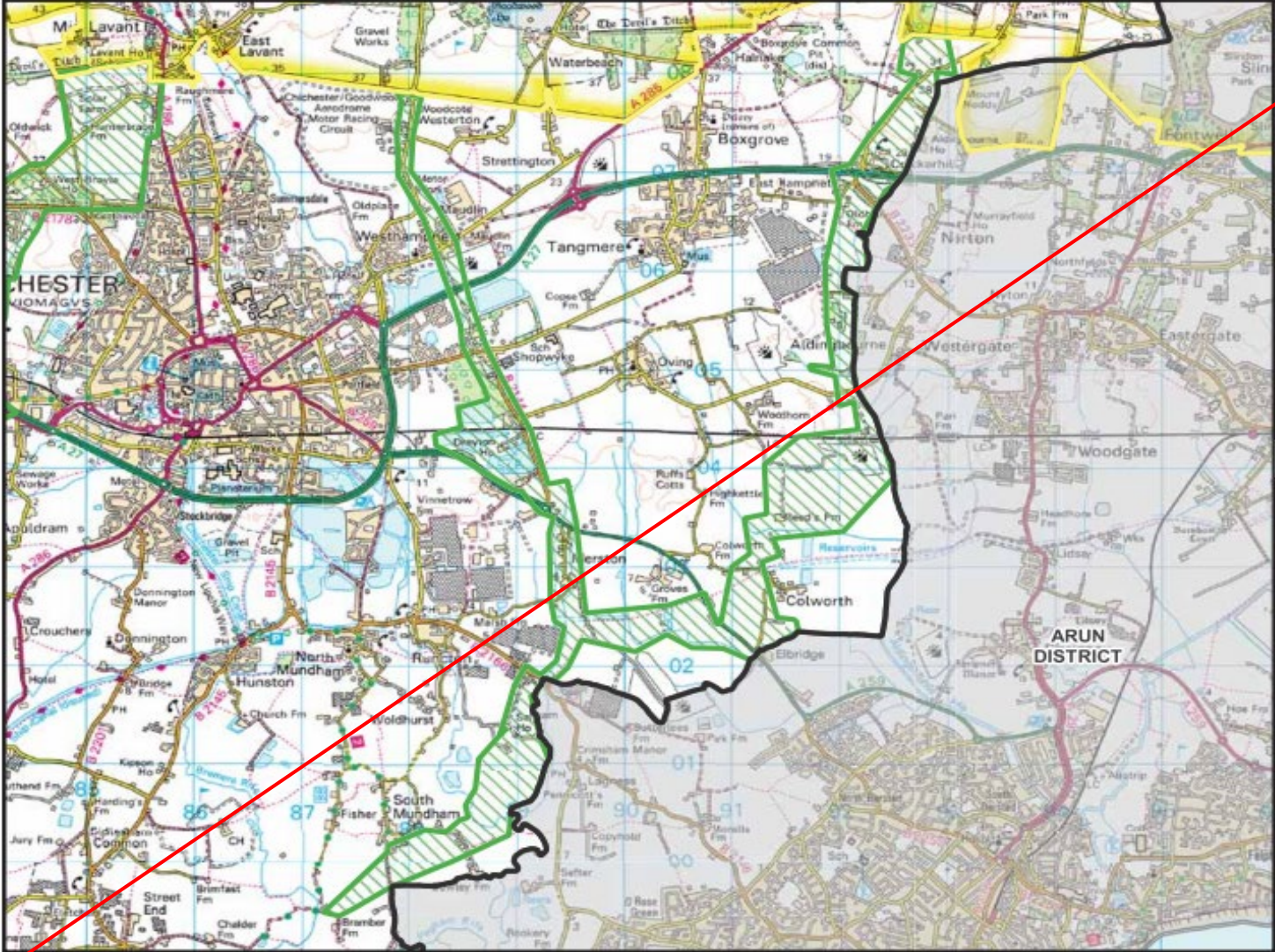
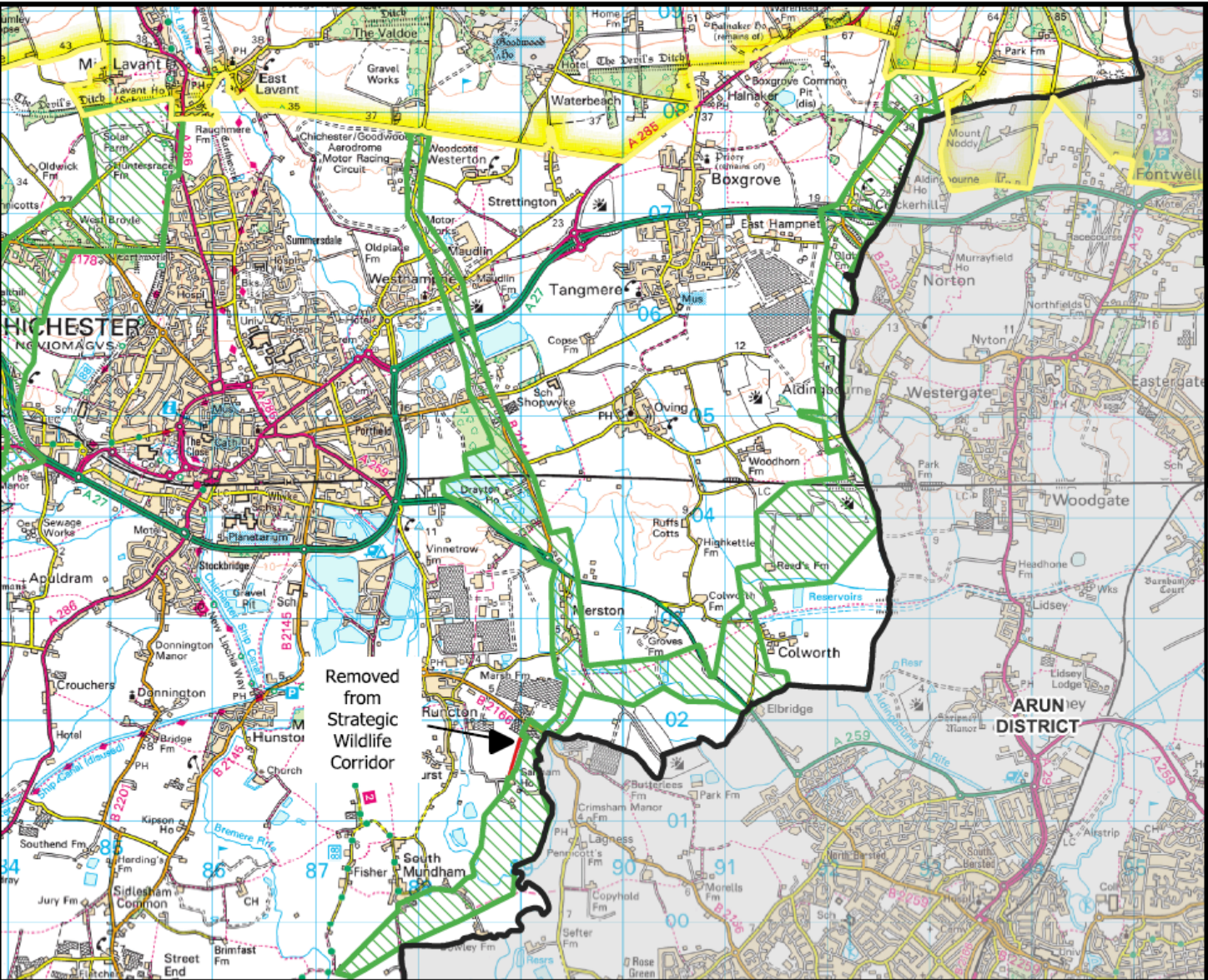
Chichester Local Plan 2021 - 2039

Schedule of Modifications to the Local Plan Policies Map (MC02)



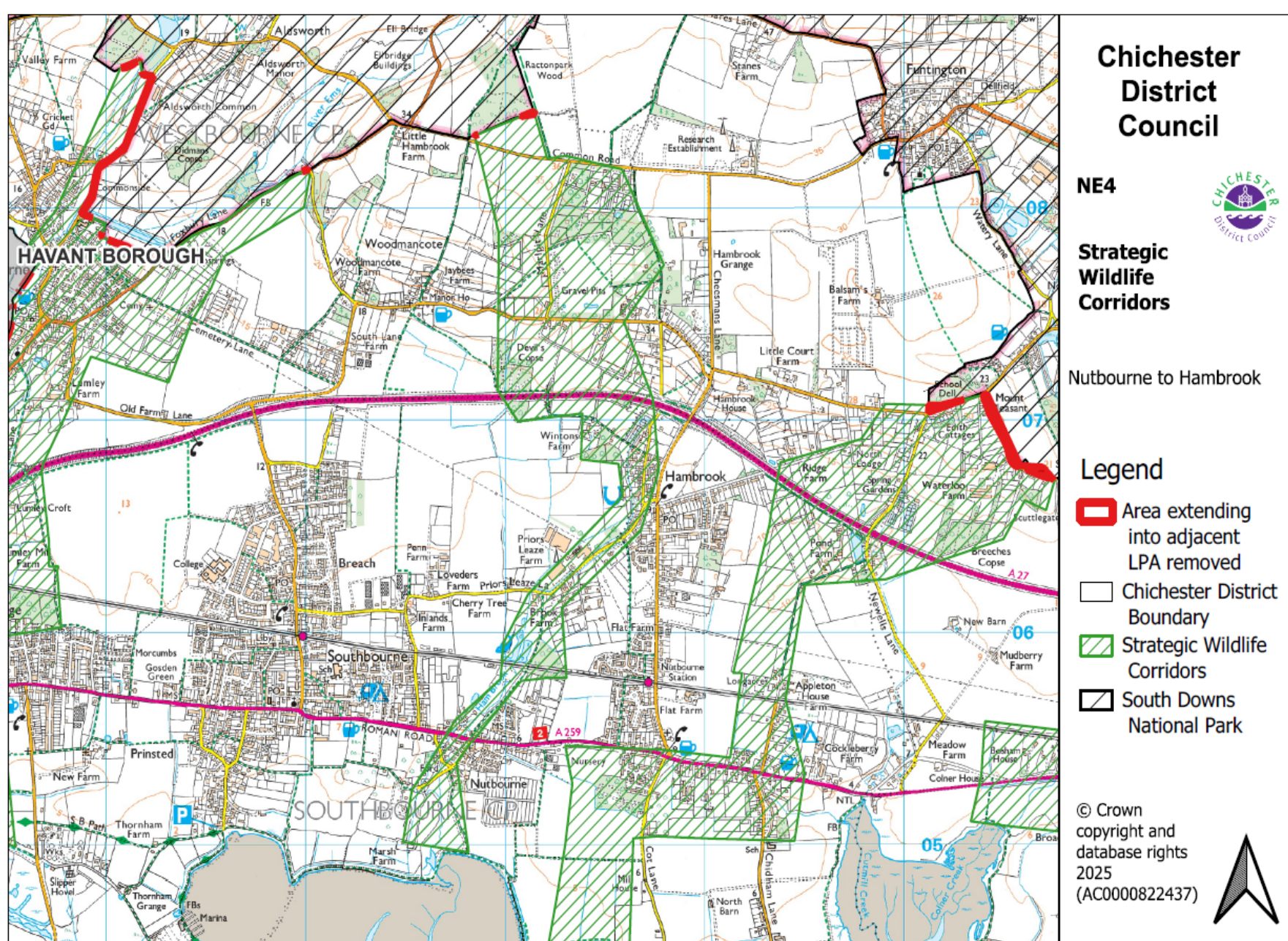
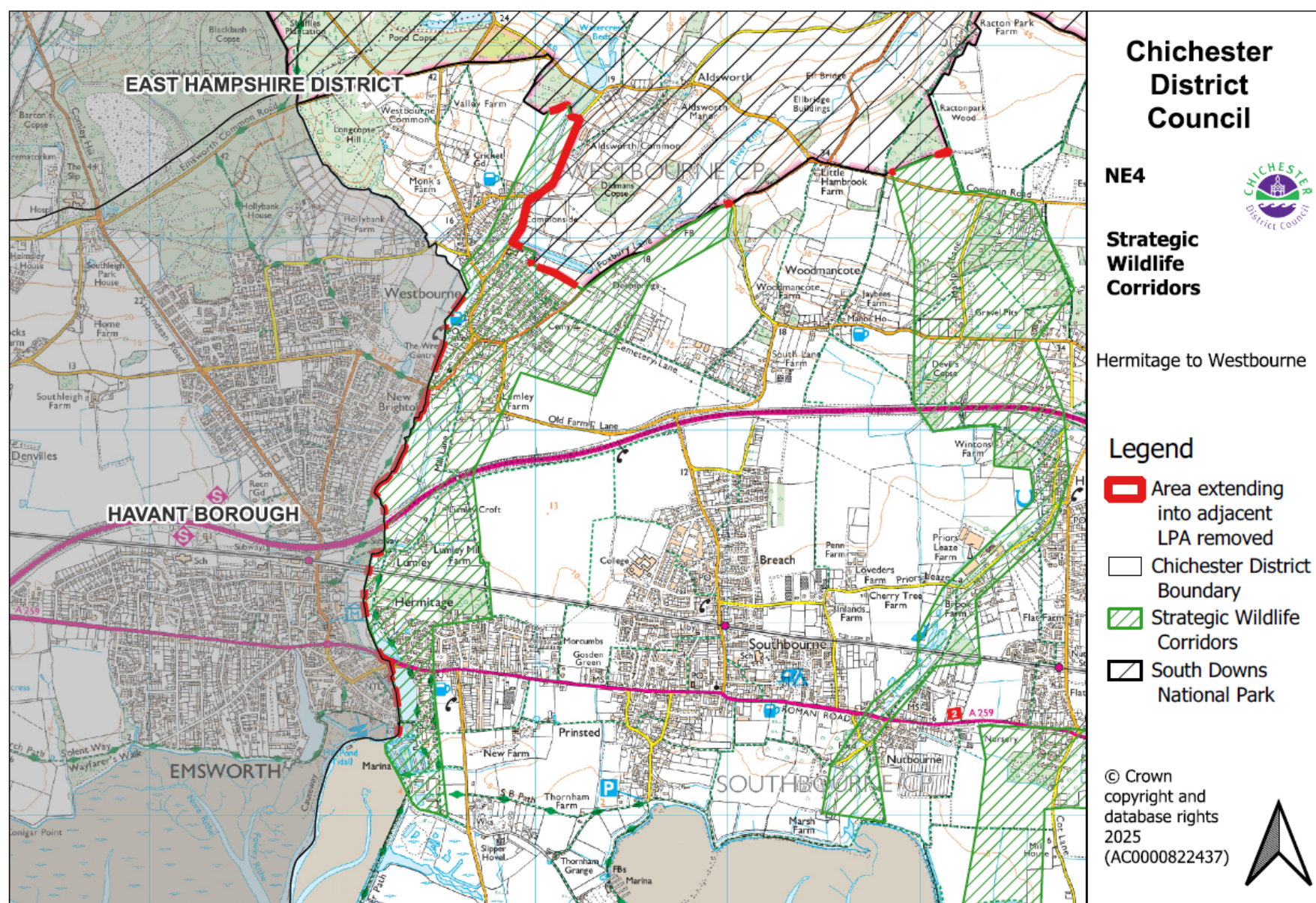
Schedule of Modifications to the Chichester Local Plan 2021 – 2039 Proposed Submission Policies Map

The maps below illustrate the consequential modifications to the Policies map as a result of the Main Modifications. The Proposed Submission map extracts are shown as struck through, with the Modifications shown on the replacement maps.

Schedule of Modifications to the Proposed Submission Policies Map	
Chapter 4 - Policy NE4 Strategic Wildlife Corridors	
PM1	Strategic Wildlife Corridors – (1) Map NE4b East of City Corridors - Amendment of Strategic Wildlife Corridor around Runcton HDA; (2) Individual maps of each Strategic Wildlife Corridor – Removing areas that overlap boundaries with other Local Planning Authorities (LPAs)
<div><div></div><div><div>Chichester District Council</div><div>NE4b</div><div>East of City Corridors</div><div>Policy NE4</div><div><div>Chichester District</div><div>Strategic Wildlife Corridors</div><div>South Downs National Park Boundary</div></div><div>1:50,000</div><div>10/01/2023</div><div>© Crown Copyright and database rights 2022 OS (100018803)</div></div></div>	
<div><div></div><div><div>Chichester District Council</div><div>NE4b</div><div>East Of City Corridors</div><div>Policy NE4</div><div><div>Removed from Strategic Wildlife Corridor</div><div>Policy NE4: Strategic Wildlife Corridors</div><div>South Downs National Park Boundary</div><div>Chichester District</div></div><div>1:50,000</div><div>17/10/2023</div><div>© Crown Copyright and database rights 2023 OS (100018803)</div></div></div>	

Chapter 4 - Policy NE4 Strategic Wildlife Corridors

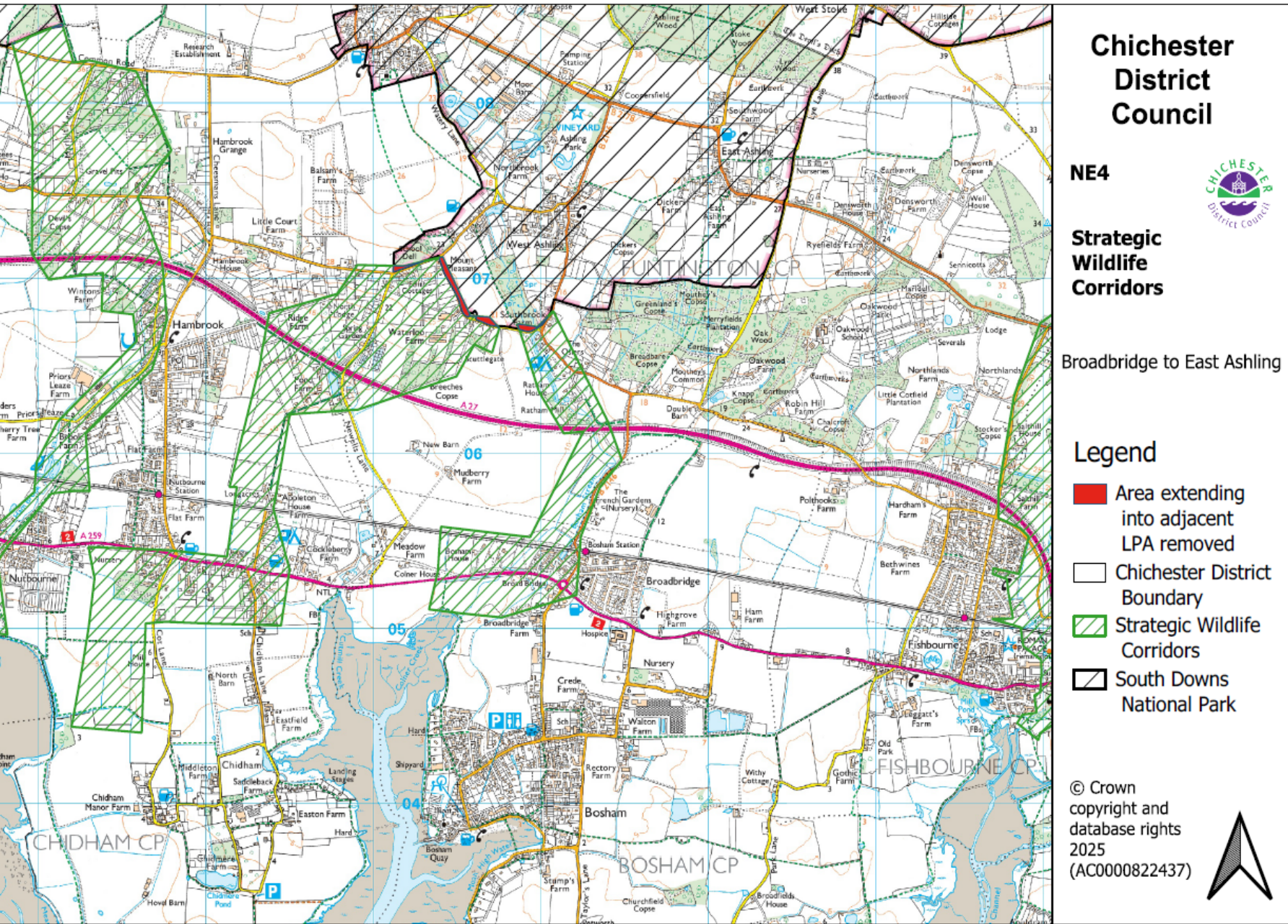
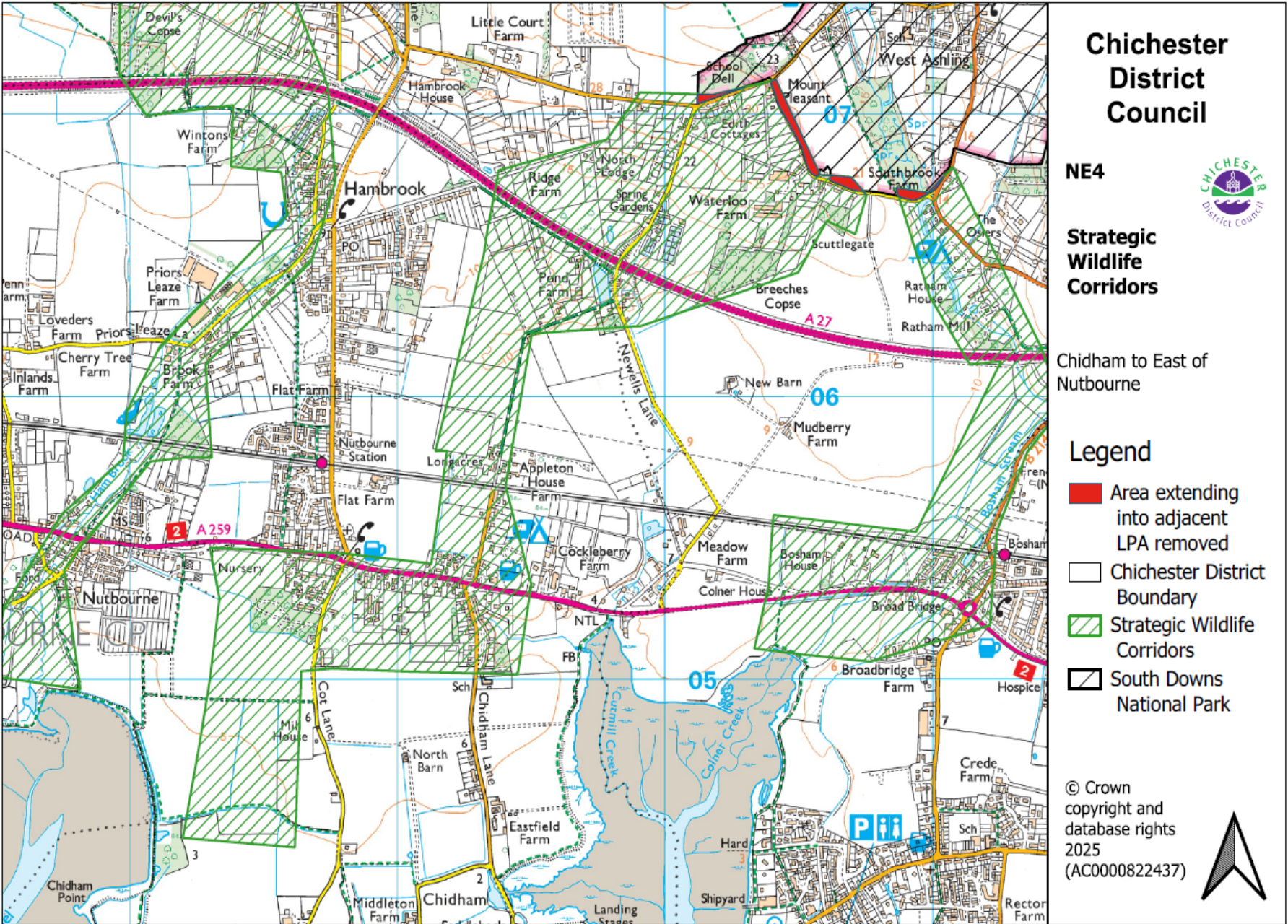
PM1	Strategic Wildlife Corridors - (1) Map NE4b East of City Corridors - Amendment of Strategic Wildlife Corridor around Runcorn HDA; (2) Individual maps of each Strategic Wildlife Corridor – Removing areas that overlap boundaries with other Local Planning Authorities (LPAs)
-----	---



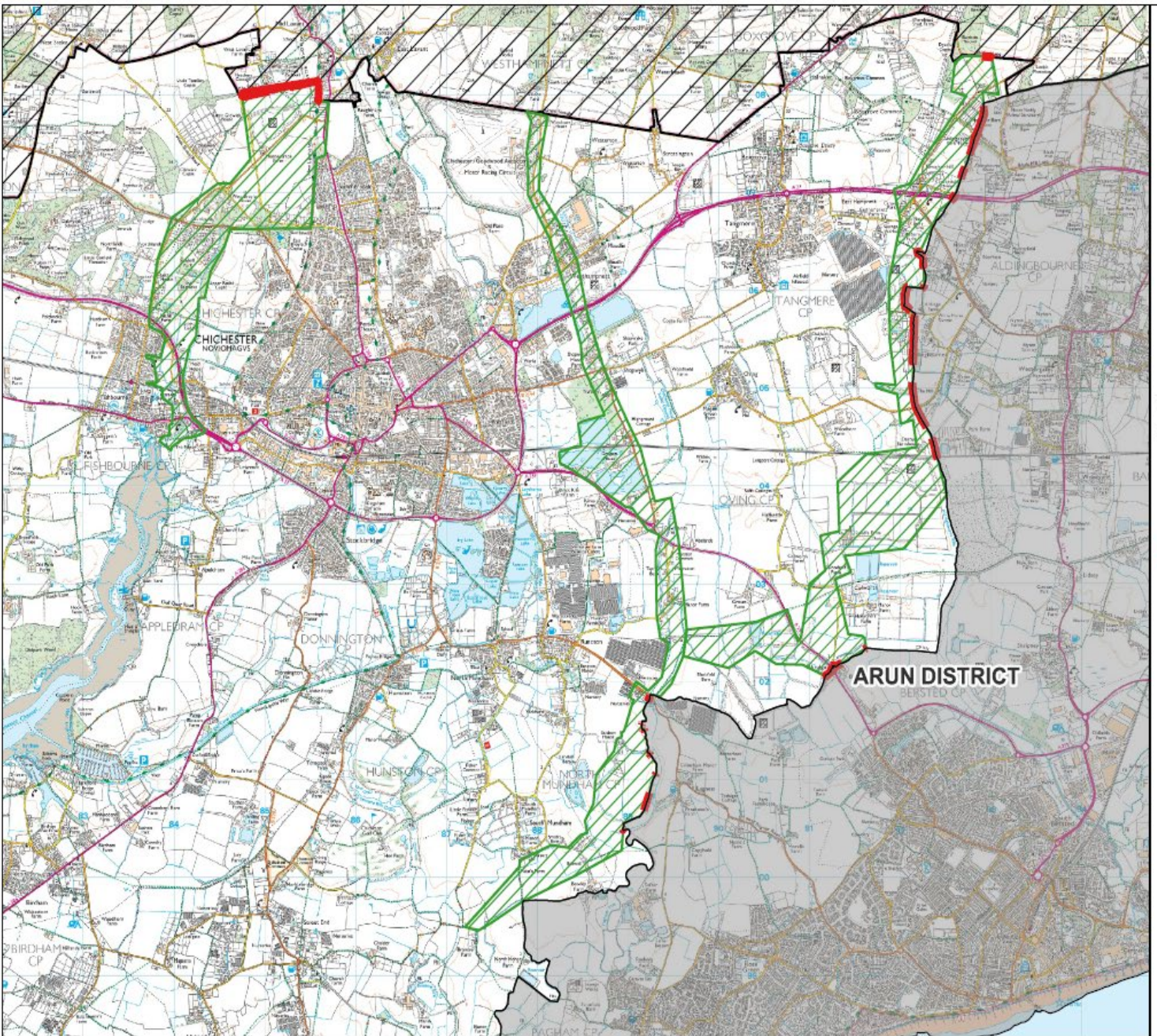
Schedule of Modifications to the Proposed Submission Policies Map

Chapter 4 - Policy NE4 Strategic Wildlife Corridors

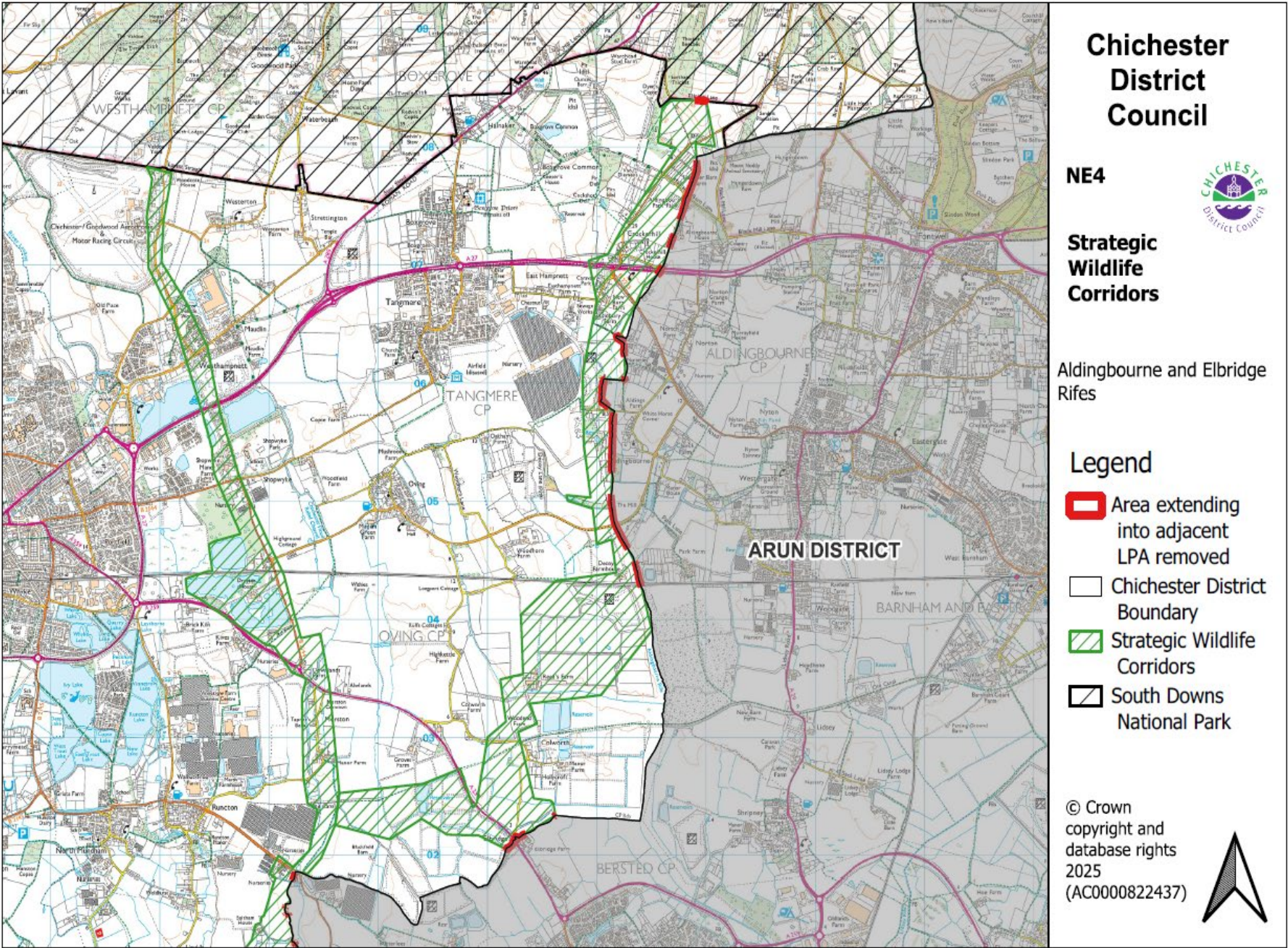
PM1 Strategic Wildlife Corridors - (1) Map NE4b East of City Corridors - Amendment of Strategic Wildlife Corridor around Runcton HDA; (2) Individual maps of each Strategic Wildlife Corridor – Removing areas that overlap boundaries with other Local Planning Authorities (LPAs)



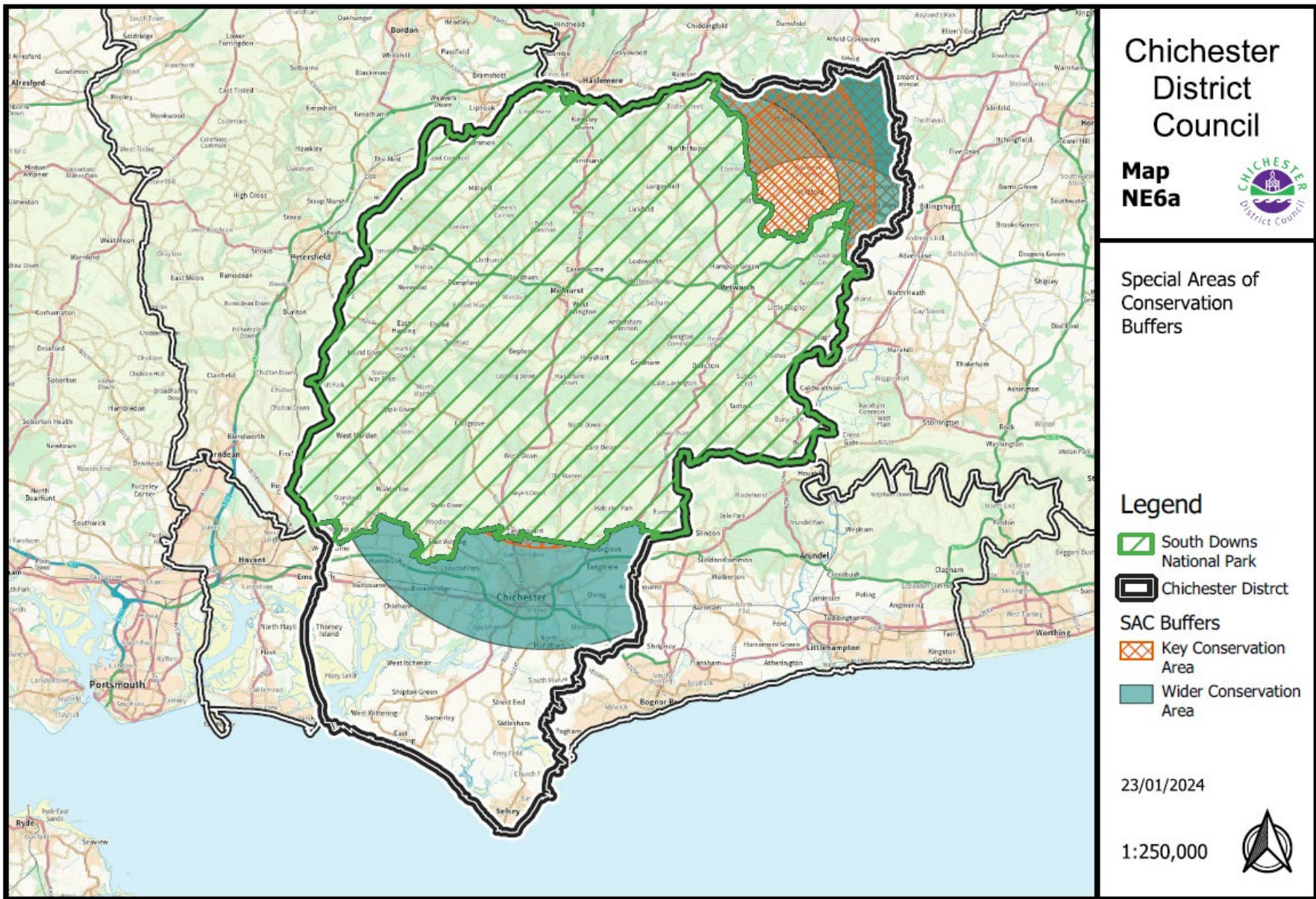
PM1 Strategic Wildlife Corridors - (1) Map NE4b East of City Corridors - Amendment of Strategic Wildlife Corridor around Runcton HDA; (2) Individual maps of each Strategic Wildlife Corridor – Removing areas that overlap boundaries with other Local Planning Authorities (LPAs)



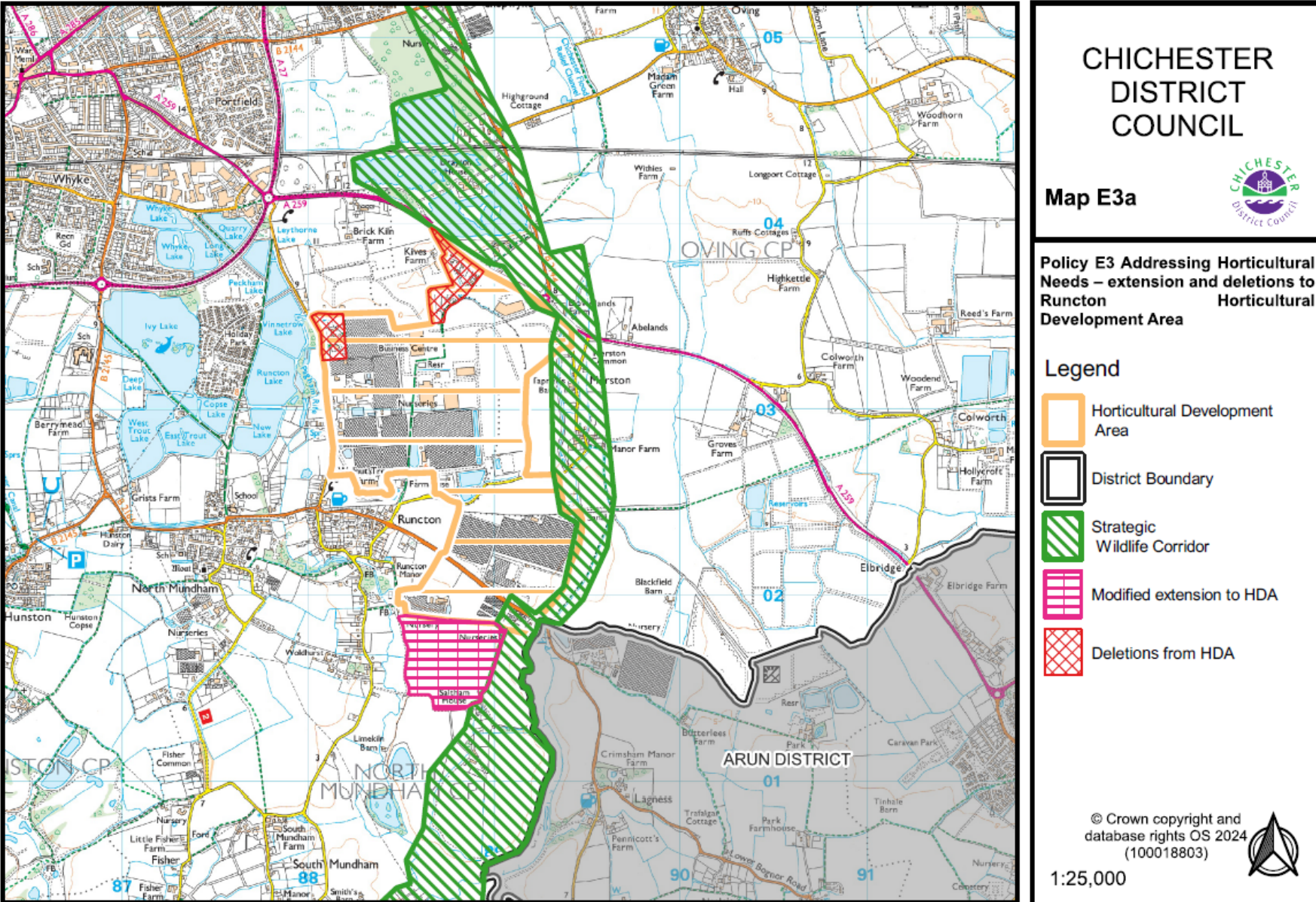
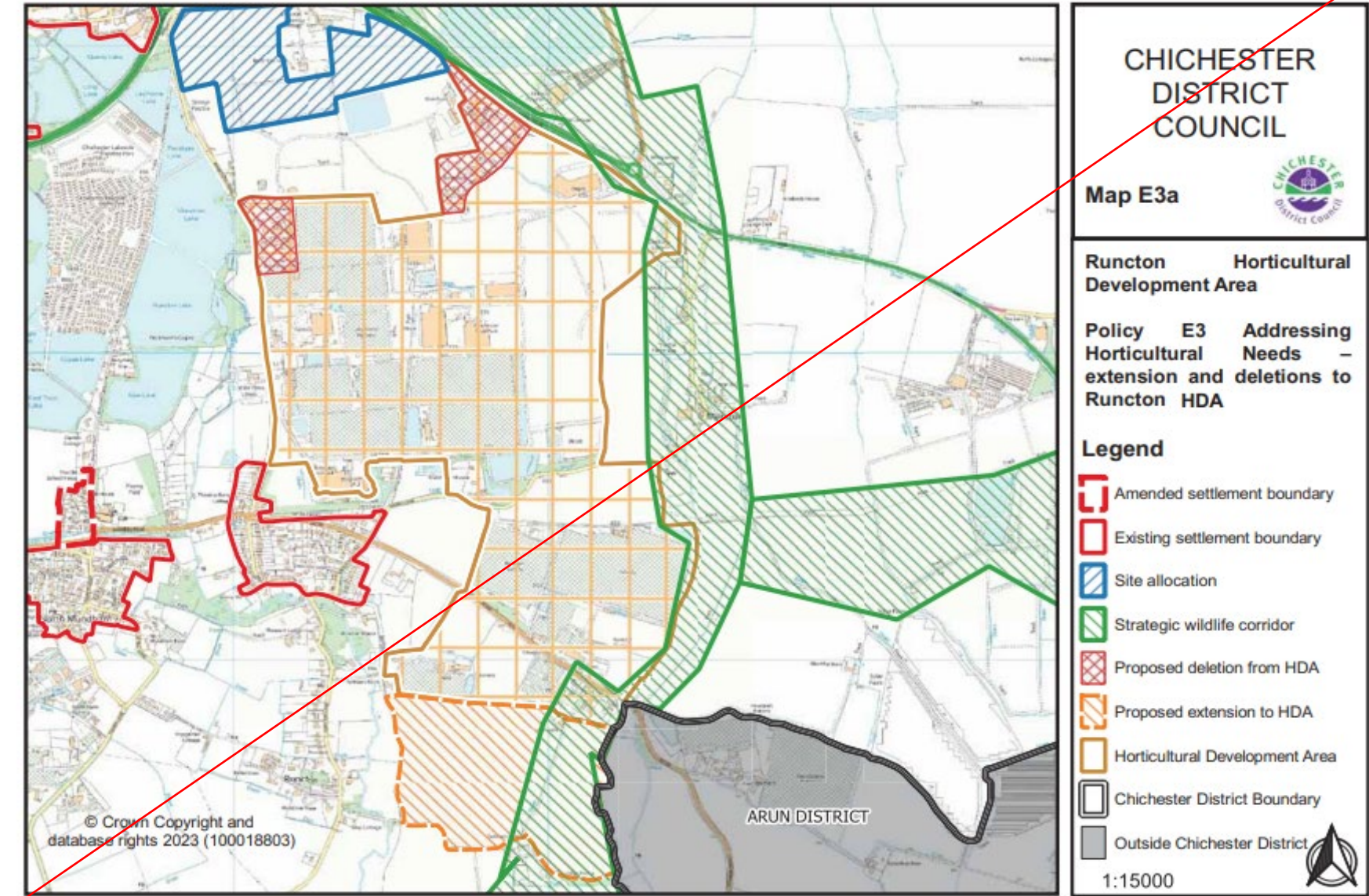
PM1 Strategic Wildlife Corridors - (1) Map NE4b East of City Corridors - Amendment of Strategic Wildlife Corridor around Runcton HDA; (2) Individual maps of each Strategic Wildlife Corridor – Removing areas that overlap boundaries with other Local Planning Authorities (LPAs)



PM2 Chichester's Internationally and European Designated Habitats – SAC – Key and Wider Conservation Areas ranges referred to in criterion d) to be added.



PM3 Change to Strategic Wildlife Corridor boundary (also shown under PM1), and change to the Runcton Horticultural Development Area extension boundary to remove conflict with the Strategic Wildlife Corridor (as detailed on Map E3a).



PM4 Land West of Tangmere – Map A14a amended to reflect site boundary changes in outline planning permission and Compulsory Purchase Order (2))

